

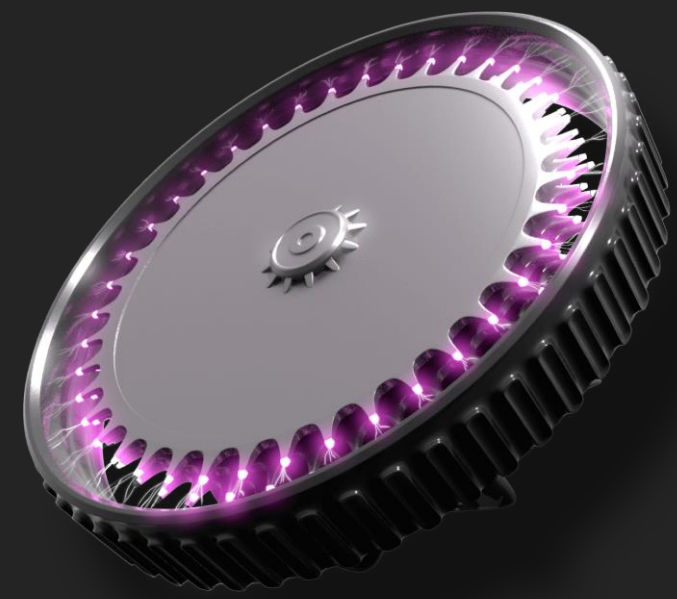
ersonal use only

PURIFLOH

Company Update

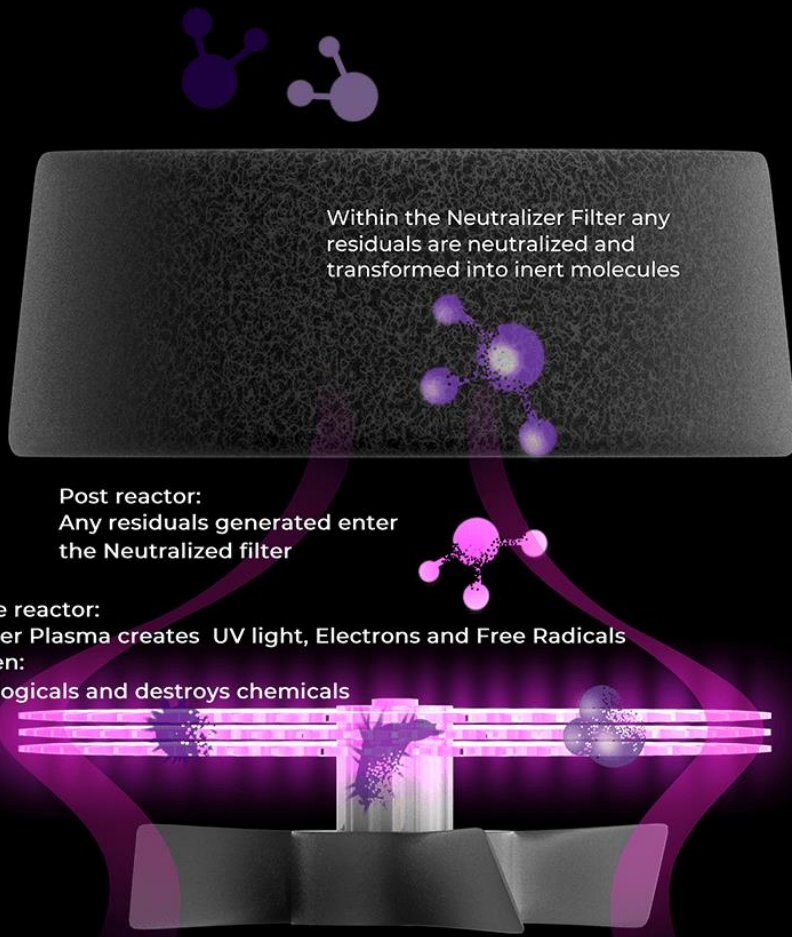
November 2020

Strictly Private & Confidential



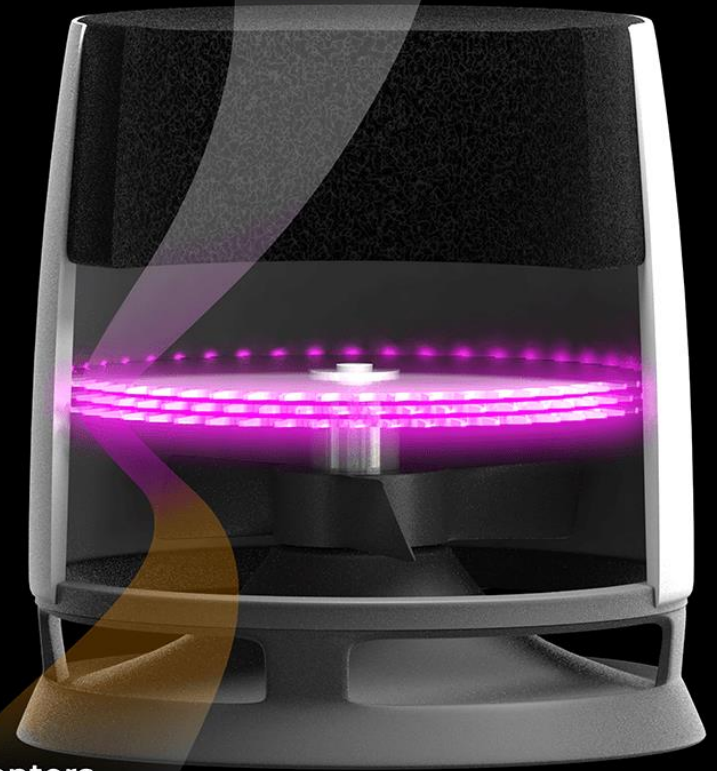
www.purifloh.com

ersonal use only



Clean air leaves the PURIFLOH system

Dirty air enters the PURIFLOH system

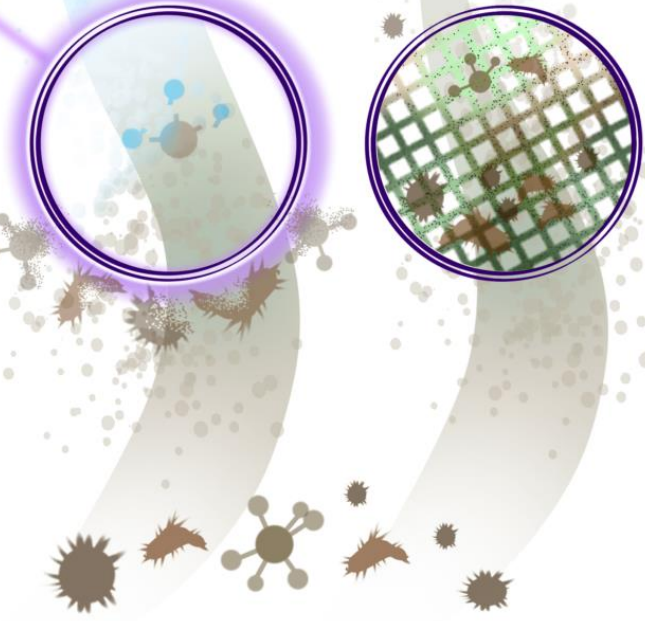


Technology Comparison

FRG is the only market solution that kills and destroys airborne [virus]

Personal use only

	PATHOGEN STERILIZATION	VOC BREAKDOWN	SMOKE REMOVAL	EMISSION SAFE NO BY-PRODUCTS	CONSISTENCY OVER TIME	ETHYLENE REMOVAL	ODOR REMOVAL
PURIFLOH	Blue	Blue	Blue	Blue	Blue	Blue	Blue
IONIZER	Blue	Grey	Blue	Grey	Grey	Grey	Grey
PECO	Blue	Grey	Blue	Blue	Grey	Grey	Blue
HEPA	Grey	Grey	Blue	Blue	Grey	Grey	Grey
CARBON	Grey	Blue	Blue	Blue	Grey	Grey	Blue
UV	Blue	Grey	Grey	Blue	Grey	Grey	Grey
OZONE	Blue	Blue	Grey	Grey	Grey	Blue	Grey



Immediate Industry Applications - Aerosol



Our technology is a solution to industries facing unprecedented challenges

ersonal use only

Aged Care Elderly disproportionately vulnerable to COVID (~80% of COVID-19 deaths in Australia aged 70+).	Health Care Clinics People avoiding sites of care because of risk of infection is hurting the viability of large clinic groups.	Hotel & Accommodation Hotel industry is among the hardest hit by pandemic (~15% occupancy for luxury hotels), driven in part by consumer fear of hygiene issues.
Public Transport ~67% reduction in patronage during lockdown and public safety concerns when we return to 'COVID-normal'.	Shopping Centres Negative perception of overcrowding and shift in consumer behaviour to online shopping places viability of some centres at risk.	Taxis / Uber Potential for mass exodus of drivers with resulting effects on disadvantaged / vulnerable commuters. Government heavily subsidising driver depot fees to keep industry afloat during COVID.
Offices / High Rise Even in States out of lockdown months ago, businesses report staff returning at only 40-60% of pre-COVID levels	Gymnasiums Deemed one of the highest-risk environments due to recent outbreaks, a COVID-safe solution that focuses on airflow is critical to instil consumer and government confidence.	Mining and Logistics Critical infrastructure risk – complete business shutdown

Critical Pathway Aerosol

- Extensive engagement with Australian industry for 'early-adopter' customers / partnerships
 - Technology as well as service solution (partnership with Monitoring solution provider)
- First-gen products have been validated (aerosol) and manufacturer has been engaged
 - Next-gen products potentially co-developed with CSIRO (dual function – air and surface)
 - Monitoring Partner HOA

Critical Pathway Water

- First-gen prototype previously developed
- Working with Australian/Regional Water resource industry for co-development partnerships

ersonal use only

Recruitment/Capability

- Alex Sava – Technology commercialisation (Infection control)
- Will Siganto – Operations/Engineering/Manufacturing (Air)
- Alistair Swain – Technology execution/Business development/Marketing (Water)